

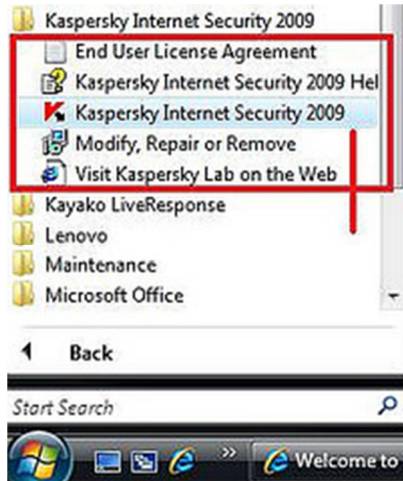
How to check which Kaspersky application version you have installed

There are 2 ways to check your application version.

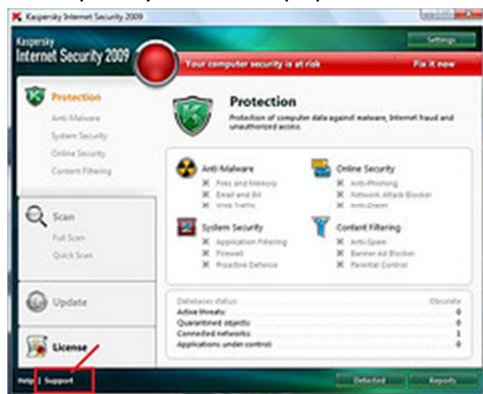
A. Mouse over your arrow to the "K" logo on the bottom left near the clock. The version should appear temporarily in a pop up box like below. If it goes away to quickly simply mouse over again.



B. Go Start - All Program - Kaspersky Internet Security.



1. Kaspersky Panel will pop-out. Then click "Support" on the left bottom Kaspersky Panel.



2. Support window will pop-out. Then application version will show at the "System information".

